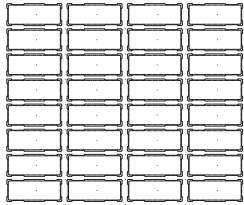




# TRAVERTINA RAW

**DESCRIPTION:** Paver **TEXTURE:** Klean-Bloc Brushed Travertine

## PALLET OVERVIEW



**Klean-Bloc technology**  
See page 24.

## NOTES

See page 62 to 64 for more technical information. When used in a permeable pavement application, see page 33 and 101 for more technical information.

See page 30 for more information about applications.

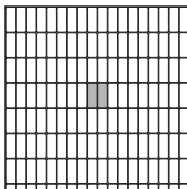
**JOINT WIDTH:** 5/8" ( 15 mm)  
**% OF SURFACE OPENING:** 7.8 %  
**INFILTRATION RATE:** 793 in./hr  
(20 150 mm/hr)

Specifications per pallet		Imperial	Metric
Cubing		<b>107.63 ft<sup>2</sup></b>	10.00 m <sup>2</sup>
Approx. Weight		2 967 lbs	1 346 kg
Number of rows		10	
Coverage per row		10.76 ft <sup>2</sup>	1.00 m <sup>2</sup>
Linear coverage per row	Depth	11.77 lin. ft	3.59 lin. m
	Length	29.25 lin. ft	8.92 lin. m

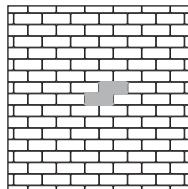


Unit dimensions	in	mm	Units/pallet
Height	2 3/4	70	320 units
Width	4 7/16	112	
Length	11	279	

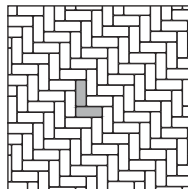
01 | Linear pattern



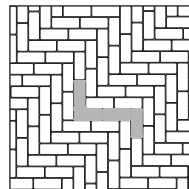
02 | Linear pattern



03 | Herringbone pattern

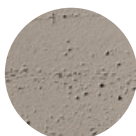


04 | Herringbone pattern

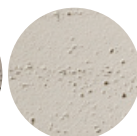


Patterns are for design inspiration only. The installer is responsible to calculate & purchase the correct amount of material.

Rock Garden Brown



Ivory



Riviera

